

SHARP®

VALUE PERFORMANCE, ELEVATE PRODUCTIVITY



MX-M264N
MX-M314N
MX-M354N



"Reliability Certified"
MX-M354N (2013)
MX-M264N & MX-M314N (2014)



"Recommended"
MX-M354N (2013)
MX-M264N & MX-M314N (2014)

The MX-M264N/M314N/M354N – ledger-size Monochrome Document Systems that will meet virtually all of your business needs.

CRISP HIGH QUALITY OUTPUT, FEATURE RICH, AND A STRONG VALUE

In today's fast-paced business environment, you need to operate at peak efficiency. With Sharp's new MX-M264N/M314N/M354N Monochrome Document Systems, you'll be able to raise office productivity to a new level. Offering enhanced versatility, Sharp's new Monochrome Document Systems deliver everything your business needs to get ahead with up to 35-ppm copying and printing, color network scanning, and integrated multi-tasking capabilities – all this, while being easy to afford. Features include a high resolution touch-screen color display with graphical user navigation for easy operation. A powerful true multi-tasking controller offers quick processing of even complex print jobs. The MX-M264N/M314N/M354N Document Systems also produce crisp, clear documents in-house, helping you save time and money. Sharp's advanced Device Management tools make it simple for businesses to control access and usage. To make integration with network applications easy, the MX-M264N/M314N/M354N Document Systems support the Sharp OSA® Development Platform.* Sharp's industry-leading security helps assure the confidentiality of your intellectual property.* That's the Sharp difference.



*Some features require optional equipment or software.

USER FRIENDLY

MULTI-FUNCTIONAL

MULTI-TASKING

HIGH QUALITY OUTPUT

VERSATILE

Advanced features plus multi-function capability allow you to meet tomorrow's document needs today

- **True multi-tasking** document system with multi-processor design
- **High resolution touch-screen** color display with graphical navigation
- Micro-fine toner technology offers sharp, **high quality images** page after page
- **1200 x 600** dpi printing provides clear, crisp image output
- Advanced **ImageSEND™** function scans documents to USB devices, network folders, e-mail and more
- Available **Document Filing System** with **thumbnail** view and **image preview** features*
- Standard network printing with **PCL®6** and optional **PostScript®3™** delivers robust performance
- Supports the Sharp OSA development platform, enabling businesses to streamline document workflow and help **enhance productivity** with **speed and efficiency***
- **Quick 20-second warm up time**



- **First copy out** time of only 4.9/4.4/4.0 seconds
- ImageSEND function scans documents at up to **50 images per minute** in both black and color
- **Flexible paper handling** system feeds up to 28 lb bond through paper trays and up to 110 lb index through the bypass tray
- On-board paper storage capacity for **up to 2,100 sheets** with options
- Optional **Super G3 fax** with available inbound routing*
- Supports **IEEE-2600™ 2008 security standard** for MFP devices*
- Standard **End-of-Lease** feature can erase all user data, job status data and address book data at trade-in time
- Advanced **web-based device management** offers both administrator level and user level login control
- Available retractable QWERTY **keyboard** for easy data entry*
- **Efficient design** offers low power consumption, fast warm up, compact footprint and long-life parts and supplies

*Some features require optional equipment.



INTUITIVE FEATURES HELP BOOST PRODUCTIVITY



High-resolution touch-screen with stylus pen for easy point-and-touch operation.



Available paper capacity stores up to 2,100 sheets with options.



Sharp's easy-to-use document filing system with thumbnail preview.*

High-performance features help maximize efficiency for busy workgroups

The Flexibility and Performance You Need

With a **high resolution touch-screen color display** and a true **multi-tasking controller**, the MX-M264N/M314N/M354N Monochrome Document Systems can help elevate your office productivity to the next level. The intuitive menu navigation system with razor sharp graphics makes operating the MX-M264N/M314N/M354N simple and easy. With Sharp's true multi-tasking controller, complex print jobs can be processed quickly, even while documents are being scanned. But that's just the beginning—with a standard **100-sheet reversing document feeder**, automatic duplexing, electronic sorting and integrated offset stacking, you'll complete even large jobs in a snap.

High Quality Output You Can Rely On

The MX-M264N/M314N/M354N Monochrome Document Systems combine enhanced second-generation micro-fine toner technology with **1200 x 600 dpi** print resolution to produce documents with crisp, clear images. **Sharp's Image Stabilization** system helps ensure uniform density and balance for crisp, high quality output page after page.

Professional Performance Your Business Can Depend On

Sharp's MX-M264N/M314N/M354N Monochrome Document Systems deliver professional performance and optimal productivity to satisfy your daily production needs. Copy/print **speeds up to 26/31/35 ppm** help you meet project deadlines with time to spare. The flexible paper handling system can feed up to 28 lb bond stock through the paper trays and up to 110 lb index through the bypass tray. With available on-line paper capacity of up to 2,100 sheets, the MX-M264N/M314N/M354N Document Systems are ready when you are.

Innovative Document Filing For Easy Access*

Sharp's optional **Document Filing System** provides up to 82 GB of hard drive space to store frequently used files like forms and templates. Plus, with Sharp's **thumbnail preview** mode, stored jobs can be located and retrieved quickly. An advanced backup system and PIN-access security helps ensure that your files are safe.

Advanced Finishing Adds The Final Touch

The MX-M264N/M314N/M354N offer an optional high-performance compact, stapling inner finisher that can give your documents a professional look and feel. You can save time and money by minimizing outsourced jobs such as proposals, presentations or newsletters.

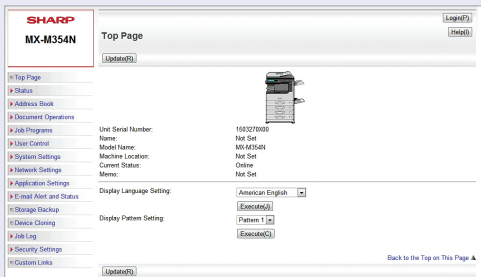
*Requires optional MX-HD12 Hard Disk Drive Expansion Kit.



ADVANCED DEVICE MANAGEMENT MAXIMIZES PRODUCTIVITY



Easy-to-use optional, full-size, retractable QWERTY keyboard.



Embedded web page.



Sharp Remote Device Management.

The MX-M264N/M314N/M354N implement versatile device management capabilities through user-friendly software to achieve ultimate efficiency

Sharp Remote Device Management (SRDM)

Make management of your MX-M264N/M314N/M354N simple and straight forward with Sharp Remote Device Management (SRDM). This easy-to-use software allows you to take control of the versatile system features and simplifies installation and management.

- With **Printer Status Monitor**, network users can view printer conditions, check paper levels, toner and more, all through an easy-to-use interface.
- With advanced **Sharp Remote Device Manager**, administrators can easily manage the setup, configuration, device settings, cloning and more! Advanced features such as **Remote Front Panel** allow administrators and support personnel to view and control the LCD panel of the machine remotely from virtually any PC on the network! Plus, with event-driven, real-time service alerts, administrators and supervisors can achieve higher productivity. Now, it's easier than ever to view service logs, click counts, history reports and more.
- Experience the convenience of an **Embedded Web Page** right from your desktop! This advanced web-based management tool allows users to create and manage their own network scanning destinations, profiles and web-links. Administrators can access device settings, account information and security settings.

Take Charge of Usage and Costs

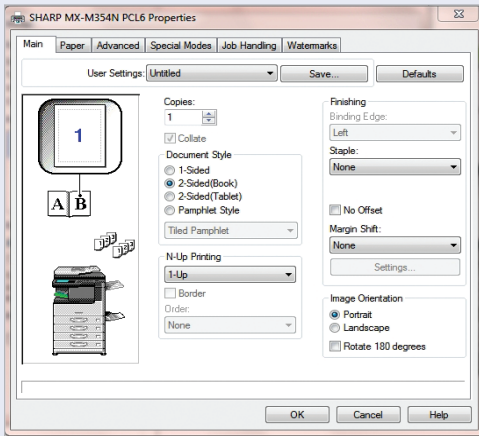
With Sharp's **device management system**, administrators and supervisors can define user groups on the MX Monochrome Series to manage and restrict features, such as copying, scanning or printing. Easily set up a custom user group to manage page counts (copy, print, scan or fax operations). The MX-M264N/M314N/M354N can **store profiles for up to 1000 users**.

24/7 Training with My Sharp

Managing all of the advanced features of your Sharp product is simple and easy. Ask your Authorized Sharp Dealer about the **My Sharp website**. This dedicated customer training website is customized to your MX Monochrome Series and allows you to locate resources and find information specific to your configuration—truly helping you maximize your investment.



ENHANCED WORKFLOW FEATURES INCREASE PRODUCTIVITY



Sharp's easy-to-use print drivers make accessing all of the MX Monochrome Series features simple and easy.



USB 2.0 port is located on the front panel for easy access

Impressive workflow efficiency with leading edge features that help deliver optimum results.

Exceptional Print Quality with Professional Finishing

With the MX-M264N/M314N/M354N Monochrome Document Systems, your business will produce high quality crisp documents; printed with superb performance and efficiency. Plus, with **1200 x 600 dpi** resolution, all of your documents will look great! **Available finishing features** include stapling for up to 50 sheets.

A True Multi-Tasking System

The MX-M264N/M314N/M354N feature a **high-performance**, multi-tasking controller that delivers copy, scan, fax and print jobs continuously for optimum efficiency.* Some controllers only perform one operation at a time. But the MX Monochrome Series continually process incoming jobs even while existing jobs are output. The result? A workflow that virtually never slows down—even at crunch time.

Direct USB Printing Adds Convenience and Portability

Direct USB printing enables users to print image files in a variety of popular formats directly from USB memory devices such as a ThumbDrive® or ClipDrive®.* Need to print PDF brochures in a hurry for a big meeting? It's easy with the MX Monochrome Series. Just plug in your portable USB memory device, select the file and your job prints immediately.

FLEXIBLE DOCUMENT DISTRIBUTION



Integrated Network Scanning

With Sharp's powerful **ImageSend** technology, you get one-touch distribution features that centralize document workflow, help reduce mail costs and save time. With up to **seven destinations**—E-mail, Desktop, FTP, Network Folders (SMB), USB, Fax and Internet Fax—getting your document where it needs to go is as easy as pushing a button. For increased efficiency, **Send to Group** mode allows you to mix group broadcast to E-mail, Fax and Internet Fax.*

Convenient E-mail Distribution

With Lightweight Directory Access Protocol (LDAP), there's no need to manually enter a recipient's complete e-mail address. Simply enter the first few characters and the MX Monochrome Series automatically searches and displays a list of matching names. **Unique File Naming** allows users to enter specific file names with custom subject fields, for easy recall of stored files. With **Sharpdesk®** personal document management software, users can organize scanned documents and integrate them into everyday workflow.

Integrated Super G3 Fax

Add powerful facsimile capability with the optional Super G3 fax module which offers automatic stapled/copied receptions and available Inbound Fax Routing to e-mail*. Sharp's innovative PC fax driver enables users to send fax documents right from their desktop. For Internet fax operation, add the optional B&W Internet Fax expansion kit.*



Versatile Application Integration

To help streamline document workflow and **enhance productivity**, the MX-M264N/M314N/M354N support the Sharp OSA development platform.* This third generation technology allows users to **interact with network applications faster** than ever before—and right from the machine LCD panel! Sharp OSA technology uses industry-standard network protocol and Web APIs, allowing the MX-M264N/M314N/M354N to communicate with many different applications. The Sharp OSA development platform is also scalable, so as your workflow needs change, Sharp's application integration can change as well.

*Some features require optional equipment.

HEIGHTENED SECURITY HELPS PROTECT YOUR BUSINESS

To help protect your data, the MX-M264N/M314N/M354N offers several layers of **standard security**, making Sharp the optimum choice to help protect employees' privacy and intellectual property. As a leader in office equipment security, Sharp makes it easy for virtually any business or government entity to safely deploy digital copying, printing, scanning and faxing.

Authority Groups

Advanced **account management** enables administrators to set authority groups for access to features of the MX-M264N/M314N/M354N. Administrators can control which department, for instance, has full access to copying, printing, scanning and/or fax. Walk-up users enter a code, Local Name and Password, or LDAP User Authentication to access the features assigned to their group.

Tracking and Auditing Information

Legislation and industry policies require companies to be more aware of information flow from their offices. Sharp offers both built-in and additional hardware/software which allows users to control, access and track usage of each device on the network.

Control Device Access Over the Network

To help restrict access to the device over the network, the MX-M264N/M314N/M354N offer IPsec, SMB and extended support for **SSL Encryption** (Secure Sockets Layer), **IP/MAC** address filtering, IEEE 802.1x authentication, protocol enable/disable and port management for maximum security.

Data Overwrite and Encryption

To help protect your data, the MX-M264N/M314N/M354N can encrypt document data using **AES** (Advanced Encryption Standard) **256-bit data encryption**. The MX-M264N/M314N/M354N can also erase the encrypted data by overwriting it. When the optional hard disk drive is installed, encrypted data can be overwritten up to seven times, offering an unprecedented level of assurance.

**Requires optional MX-HD12 Hard Disk Drive Expansion Kit.*

Documents and All Other Data Remain Confidential

The MX-M264N/M314N/M354N offer **Confidential Printing**, which when used, requires users to enter a PIN code in order to print a queued document. To help protect your direct-print documents from unauthorized viewing, the MX-M264N/M314N/M354N offer encrypted PDF printing and scanning. Additionally, **Secure Fax Release** ensures received fax documents are held in memory until an authorized user enters a PIN code, so that compliance with healthcare regulations such as HIPAA is easier. A convenient **end-of-lease feature** erases all data, including document filing area (when optional hard disk drive is installed), user data, job status data and address book.

Network Scanning Access Control

To help protect your network from unauthorized e-mail communications, the MX-M264N/M314N/M354N support **User Authentication**, requiring users to login before performing any network scanning operations.

Data Security Kit (Optional)*

For maximum protection, the optional data security kit offers additional features, such as **Data Overwrite on-demand** and at Power Up, Document Filing* access control, **Incorrect Password Lockout**, Restricted Status Display and Restricted List printing.

These scalable security offerings aim to protect your intellectual property, preserve confidential information and help your business to meet regulatory requirements, such as the Health Insurance Portability and Accountability Act (HIPAA), and the Gramm Leach Bliley Act (GLB). For additional information visit: www.sharpusa.com/security

HELPING PROTECT THE ENVIRONMENT



An Environmentally Responsible Approach to Product Design

The MX-M264N/M314N/M354N Monochrome Document Systems utilize Sharp's advanced **micro-fine toner technology**, which offers a lower consumption rate and produces less waste than conventional toners, resulting in longer replacement intervals. Sharp supplies are packaged using fully **recyclable materials**. Long-life consumable parts help minimize service intervals and downtime, resulting in lower operating costs. With two different energy saving modes, power can be reduced or shut off at set intervals. The MX-M264N/M314N/M354N document systems are **ENERGY STAR® qualified** and **RoHS compliant** to restrict the use of hazardous substances.

Toner Recycling Program

As part of our commitment to helping preserve the environment, Sharp offers our customers zero waste land fill recycling for all Sharp consumables, including cartridges, bottles, toner collection containers and drum units. Sharp encourages customers to recycle their used Sharp toner cartridges in bulk by providing a pre-paid Recycling Kit for their return to our facility.

Environmental Leadership

As a testament to our commitment to the environment, Sharp is a multi-year winner of the **ENERGY STAR** annual **Excellence in Energy Proficiency Product Design**. Sharp is also a multi-year winner of the **SmartWaySM Excellence Award**, which recognizes companies for conserving energy and lowering greenhouse gas emissions in logistics and transportation. Sharp was also a previous recipient of the **Excellence in Partnership Green Contractor Award** and the **Evergreen Award** from the General Services Administration (GSA) and the Coalition for Government Procurement. These awards recognize environmentally responsible businesses and their efforts on recycling, waste reduction and affirmative procurement practices.

Global Initiatives

Sharp is committed to environmental sustainability and corporate responsibility including planning, design, manufacturing, distribution and product end-of-life management. For more information about Sharp's environmental leadership including information about energy efficient products, electronics or toner cartridge recycling, please visit www.sharpusa.com/environment.

MX-M264N/M314N/M354N SPECIFICATIONS

Main Specifications

MX-M264N/ M314N/M354N	Base models include multi-tasking controller, high-resolution touch screen display, 100-sheet RSPF, PCL [®] 6 network printing/scanning, duplexing, 2 x 500-sheet paper drawer and 100-sheet Bypass Tray.		
Type	Desktop, multi-function digital document system		
Display	7.0" (diagonally measured) color dot matrix touch panel display.		
Functions	Copy, print, network print, network scan, document filing and fax ¹		
Copy System	Dry electrostatic transfer/Dual component developer/Magnetic brush development/OPC drums/heat roller fusing/white LED exposure		
Originals	Sheets and bound documents		
Max Original Size	11" x 17"		
Copy Size	Min. 5½" x 8½", Max. 11" x 17"		
Copy Speed	26/31/35 ppm (8½" x 11")		
Multiple Copy	Max. 999 copies		
First Copy Time (Seconds)²	MX-M264N	MX-M314N	MX-M354N
Platen Glass	4.9	4.4	4.0
Doc. Feeder	7.9	7.1	6.7
Warm Up Time	20 seconds or less ²		
Magnification	25% to 400% in 1% increments (with document feeder 25%-200%)		
Original Feed	100-sheet RSPF with original size detection		
Scan Speed	Copy mode: (B&W) Up to 50 OPM @ 600 x 400 dpi; Up to 36 OPM (Color) @ 600 x 600 dpi. ² Network Scan: Up to 50 OPM (B&W or Color) 200 x 200 dpi. ²		
Original Sizes	5½" x 8½", 8½" x 11", 8½" x 11" R, 8½" x 14", 11" x 17" (13-32 lb. bond)		
Paper Feed System	Standard: (2) 500-sheet paper drawer (letter/legal/ledger/statement size) and 100-sheet bypass tray (letter/legal/ledger/statement/envelope size). Optional: Single or double drawer paper deck (500 sheets each drawer), letter/legal/ledger/statement size.		
Paper Types	Paper drawers: 16 lb. bond -28 lb. index. Other paper types include plain, pre-printed, recycled, pre-punched, letterhead and color paper. Bypass Tray: 16-28 lb. bond (plain paper), 15-16 lb. bond (thin paper), 110 lb. index (heavy paper), 20-24 lb. bond (Monarch/Com-10 envelope), tab paper (letter). Also label paper, gloss paper, pre-printed, recycled, pre-punched, letterhead, color paper and OHP film.		
Duplexing	Standard automatic duplex copying and printing		
CPU	Up to 600 MHz Multi-Processor Design		
Interface	RJ-45 Ethernet (10/100/1000Base-T), USB 2.0 (2 host ports, front and rear), USB 2.0 (1 device port, rear)		
Memory	Standard 2 GB		
Hard Disk Drive	Optional (160 GB)		
Copy Resolution	Scan: B&W/color: 600 x 600 dpi Copy Output: B&W: 600 x 600 dpi		
Exposure Control	Modes: Automatic Text, Text/Photo, Text/Printed-Photo, Printed-Photo, Photo, Map, Pale-Color Document. Settings: Auto or 9 step manual		
Halftone	256 gradations/2 levels (monochrome)		
Copy Features	Scan-Once Print-Many, electronic sorting, offset-stacking, Auto Paper Sensing (APS), Auto Magnification Sensing (AMS), image preview, image edit, auto tray switching, rotation copy, reserve copy, tandem copy, book copy, margin shift, tab-paper insertion, edge erase, center erase, book divide, dual page copy, cover pages, insert pages, OHP insertion, job build, card shot, mirror image, black-white reversal, centering, proof copy, 2-in-1/4-in-1/8-in-1, pamphlet, watermark custom image, job programs, date/character/page stamp. ¹		
Account Control	Up to 1000 users. Supports user-number authentication (on device), login name/password (on device) or login name/password (on device via LDAP server) for Copy, Print, Scan, Fax and document management.		
Output Tray Capacity	Main output tray (top) 500 sheets (face down); optional eject tray (right 1 side) 100 sheets (face down)		

Main Specifications (continued)

Firmware Management	Flash ROM with local (USB), network update capability and firmware update 1 to N with SRDM (Sharp Remote Device Management)
Configuration Method	Web-based management with user/administrator level login, cloning (1 to N) with SRDM and remote front panel access
Service/Functions	Remote front panel, remote access to service logs and click counts
Accessibility Features	Adjustment of Key Touch-Send and Speed, Concave Key, Document Feeder Free Stop, Job Programs, Remote Front Panel, Universal Grip for Paper Trays, and Disable Screen Timeout
Environmental Standards	International Energy Star Program Ver. 1.2, Law on Promoting Green Purchasing, European RoHS (Restriction of Hazardous Substances)
Power	AC 100-127 VAC, 60 Hz, 12 Amps
Power Consumption	Maximum: 1440 W or less
Weight	Approx. 113.8 lbs.
Approx. Dimensions	24½" (w) x 25½" (d) x 31½" (h)
Network Printing System	
PDL	Standard PCL [®] 6 compatible, optional Postscript 3
Resolution	1200 x 600 dpi
Print Speed	26/31/35 pages per minute (8½" x 11")
Print Drivers	Windows [®] Server [®] 2003-2008, Windows [®] XP, Windows XP x64, Windows [®] Server x64, Windows Vista [®] , Windows Vista [®] x64, Windows [®] 7, MAC, OSX (including 10.4.11, 10.5-10.5.8, 10.6-10.6.8, 10.7-10.7.2), all MAC PPD.
Features	Auto configuration, continuous printing, electronic sorting, offset stacking, N-up printing, duplex printing, transparency inserts, margin shift, image rotation, different cover page, poster print, job bypass print, job retention, confidential print, proof print, user authentication, image stamp and watermarks. Additional features: network tandem print, carbon copy print mode, different cover page/last page/other page, tab paper settings, tab printing, chapter inserts, page interleave and bar code font printing ¹
Direct Printing	File Types: TIFF, JPEG, PCL, PRN, TXT, PDF, Encrypted PDF, (optional) Postscript Methods: FTP, Web page, E-mail and USB memory
Resident Fonts	80 outline fonts (PCL), 136 fonts (PS)
Interface	RJ-45 Ethernet 10/100/1000 Base-T, USB 2.0
Operating Systems	Windows [®] Server [®] 2003-2008, Windows [®] 2000/XP, Windows Vista, Windows 7, MAC OSX 10.4.11, 10.5-10.5.8, 10.6-10.6.5, 10.6.8, 10.7-10.7.2, Novell [®] Netware [®] 3x, 4x, 5x, Sun [®] OS 4.1x, Solaris [®] 2x, Unix [®] , Linux [®] and Citrix [®] (Metaframe, Presentation Server 4, 4.5) and Windows Terminal Services. ¹
Network Protocols	TCP/IP (IPv4, IPv6, IPSEC) SSL (HTTP, IPP, FTP), SNMPv3, SMTP, POP3, LDAP, 802.1x for Windows and Unix. LPD and LPR for Unix. IPX/SPX [®] for Novell environments. EtherTalk [®] and NetBEUI. AppleTalk [®] for Macintosh [®] environments. ¹
Printing Protocols	LPR, IPP, IPPS, PAP, Raw TCP (port 9100), FTP and Novell Pserver/Printer
Network Security	IP/MAC address filtering, protocol filtering, port management, user authentication and document administration. ¹
Security Standards	IEEE-2600 [™] -2008, DoD (NSTISSI) #11, DoD Directive 8500.2, DoD (DISA) ¹
Network Scanning System	
Scan Modes	Standard: Color, monochrome, grayscale
Max Original Size	11" x 17"
Optical Resolution	600 dpi
Output Modes	600 dpi, 400 dpi, 300 dpi, 200 dpi, 150 dpi, 100 dpi
Image Formats	Monochrome: TIFF, PDF, Encrypted PDF, XPS, PDF/A Color: Grayscale, Color TIFF, JPEG, PDF, Encrypted PDF, XPS, PDF/A Internet Fax: TIFF-FX, TIFF-C, TIFF-F, TIFF-S ¹
Image Compression	Monochrome Scanning: Uncompressed, G3 (MH), G4 (MR/MMR) Color/Grayscale: JPEG (high, middle, low) Internet Fax mode: MH/MMR (option)

Network Scanning System (continued)

Scan Destinations	E-mail, Desktop, FTP, Folder (SMB), USB, Internet fax (option), Super G3 fax (option)
One-touch	Up to 1000 (combined scan destinations)
Group Destinations	Up to 500
Programs	48 (combined)
Max. Jobs	Up to 100
Network Protocols	TCP/IP and SSL (includes HTTP, SMTP, LDAP, FTP, POP3), SMB, ESMT and 802.1x.
Network Security Software	E-mail server user authentication for LDAP and Active Directory Sharpdesk [®] desktop document management software (1 user license)

B&W Super G3 Fax Kit (option)

Transmission Mode	Super G3, G3
Modem Speed	33.6 KBPS ³
Compression	JBIG, MMR, MR, MH
Scanning Method	Sheet fed simplex or duplex or book
Max. Resolution	400 dpi
Transmit Speed	Approx. 2 seconds with Super G3/JBIG ⁴
Auto Dialing	Up to 1000 (combined scan destinations)
Group Dial	Up to 500 destinations
Inbound Fax	Forwards received fax data to E-mail (Requires MX-HD12)
Routing	
Long Length Originals	Up to 31½" (for transmission)
Programs	48 (combined)
Memory	512 MB, 1 GB ¹
Halftone	256 levels

Inner Finisher (option)

Type	Built-in finisher
Output Capacity	500 sheets (letter/statement) or 250 sheets (ledger/legal size)
Output Delivery	Face down
Stapling Media	Plain paper (letter, legal, or ledger size)
Stapling Position	1 rear
Power Source	Supplied from main unit
Stapling	Up to 50 sheets (letter size) or 30 sheets (legal, ledger or mixed)
Stapled Sets	30 bundles or 500 sheets (letter or statement size) or 30 bundles or 250 sheets (legal or ledger size)
Weight	Approx. 28.6 lbs.
Dimensions	18¾" (w) x 18¼" (d) x 8" (h)

Optional Equipment

MX-DE17	Stand/1 x 500 Sheet Paper Drawer
MX-DE18	Stand/2 x 500 Sheet Paper Drawer
MX-DS16	Low Stand
MX-DS17	High Stand
MX-FN23	Inner Finisher
MX-SCX1	Staple Cartridge (MX-FN23)
MX-TR11	Job Separator
MX-TE10	Right-side Exit Tray Unit (Requires MX-FN23)
MX-PK11	Postscript [®] 3 [™] Kit
MX-FX11	Fax Expansion Kit
MX-FWX1	Internet Fax Kit (Requires MX-HD12)
MX-PF10	Bar Code Font Kit
AR-SU1	Stamp Unit (Requires AR-SV1 Stamp Cartridge)
AR-SV1	Stamp Cartridge
MX-KB14	Full-size, Retractable QWERTY Keyboard
MX-HD12	Hard Disk Drive Expansion Kit
MX-AMX1	Application Integration Module (Requires MX-HD12)
MX-AMX2	Application Communication Module (Requires MX-HD12)
MX-AMX3	External Accounting Module (Requires MX-HD12)
MX-FR37U	Commercial Data Security Kit

Supplies

MX-312NT	Black Toner Cartridge
MX-312NW	Black Developer
MX-312NR	Drum

¹ Some features require optional equipment. See your local dealer.

² May vary depending on product configuration, machine settings and operating and/or environmental conditions.

³ Actual transmission time will vary based on line conditions.

⁴ Based on Sharp Standard Test Chart with approximately 700 characters, letter size in standard resolution.



SHARP ELECTRONICS CORPORATION
1 Sharp Plaza, Suite 1
Mahwah, NJ 07495-1123
1-800-BE-SHARP • www.sharppusa.com

Design and specifications subject to change without notice. Sharp, Sharp OSA, Sharpdesk, My Sharp, and all related trademarks are trademarks or registered trademarks of Sharp Corporation and/or its affiliated companies. Windows, Windows NT, Windows Server and Windows Vista are trademarks or registered trademarks of Microsoft Corporation. All other trademarks are the property of their respective owners.

