



KONICA MINOLTA

TECHNOLOGY



## **bizhub® 658e/558e/458e**

MONOCHROME MID-VOLUME MULTIFUNCTION PRINTERS





## AT A GLANCE bizhub 658e Series

- Speeds up to 65 ppm
- Dual scanning up to 240 opm
- Large 9" touchscreen display with integrated standard web browser
- Built-in Emperon® print system
- 6,650 sheet maximum capacity
- Automatic paper sizing measurement
- Three finishers to choose from with a variety of post-processing options

# YOU NEED MORE EFFICIENT. YOU WANT MORE POWERFUL. **CHALLENGE ACCEPTED. AND MET.**

## Powerful just got more efficient.

Ready to get more done in less time? We've got you covered. Welcome to Konica Minolta bizhub 658e series. Some businesses choose the 658e series for its power, some for its efficiency. Others choose it for both — it's that advanced. And it works the way you need it to — helping your business run faster, smoother and ultimately, smarter. Plus there's an intelligent 9" multi-touch display panel that's as easy to use as a tablet. With robust security features and environmental performance that always considers our planet, the bizhub 658e series maximizes performance — proof that power and efficiency can equally co-exist.

### ENHANCED FUNCTIONS ENSURE BETTER INPUT/OUTPUT TASKS

The bizhub 658e series improves on a number of pivotal MFP functions. First, scanning/printing image quality are now superb. Second, the input/output tasks, including functionality and productivity when handling large-volume data have been enhanced.

### OPERABILITY TO IMPROVE WORK EFFICIENCY

The 9" electrostatic multi-touch panel is all about the user. This smart panel is as simple to use as a tablet. Every operating section has improved functionality, providing more efficiencies in your day-to-day workflow. And its smooth operability puts convenience at every user's fingertips.

### UPGRADED SOLUTION CONNECTIVITY SUPPORTS A WIDE VARIETY OF WORK STYLES

Your office is unique. That's why we designed the bizhub 658e series to accommodate different work styles — and perform robustly for any workflow. Mobile device connectivity, Cloud service and external business applications are all supported.

## IMPROVED TO EXCEED OUR OWN EXPECTATIONS

Developing solutions that impact your business is behind everything we do at Konica Minolta. We've upgraded the bizhub 658e, 558e and 458e with a number of advancements to help you get your job done faster, easier — and with better results.

### AUTOMATIC PAPER SIZE MEASUREMENT

These new units can measure non-standard sized paper automatically — making your job easier. Simply load paper into the ADF or glass platen, then press the MFP start button. The MFP will automatically measure paper size and register the measurement into the memory.

### 1,200 DPI FOR STUNNING DETAIL

With print resolution of 1,200 dpi, the bizhub 658e series reproduces small text and fine lines with crisp clarity and detail. The thickening of lines that occurs during printing can be adjusted — so that any lines requiring precision and accuracy (for example, a narrow font or barcodes) can now be printed with sharp high definition.

### IMPROVED COMPACT PDF

Now you can scan files to PDF format and not worry about running out of storage space. Image noise has been reduced and image quality has been improved, while also producing smaller compact PDF file sizes.

### SIMPLE CUSTOMIZATION

And there's more. Now, just by logging into your free account on the Konica Minolta MarketPlace website, you have immediate access to an easy-to-use, drag-and-drop tool that allows you to create customized touchscreens for your MFP. With this MFP User Interface (UI) Designer Tool, you can add or delete functions to streamline your workflow, customize the UI with company colors, images and logos, and even copy and share personalized MFP UIs that you've designed with other bizhub MarketPlace users.

## THE KONICA MINOLTA MARKETPLACE

The Konica Minolta MarketPlace is your source for all the apps you need to keep you informed, enhance the MFP experience and accelerate your business. Whether through your internet connected bizhub or your desktop computer, access to the MarketPlace is smart, easy and convenient.

### YOUR ONE-STOP SHOP

As the award-winning recipient of BLI's 2017 Outstanding MFP App Ecosystem, Konica Minolta MarketPlace is a great source for cutting-edge technology — and with new apps being developed all the time, your bizhub MFP will become even more powerful as you add new capabilities in all the right categories. Scanning, printing, social networking, security, document management and Cloud-based apps are all easy to access and designed to help increase productivity.

### GET IT ALL

When Konica Minolta created bizhub apps, we also created the MarketPlace: a simple, user-friendly gateway that makes it easy to access, explore and download the apps that are most important to streamlining your workflow, improving your productivity and enhancing your user experience.

[www.konicaminoltamarketplace.us](http://www.konicaminoltamarketplace.us)



# PRODUCTIVITY

## HAS NEVER LOOKED OR WORKED BETTER.



At Konica Minolta, our innovation comes from listening to our users and developing the solutions they need to do their jobs better. That's why we've updated the bizhub 658e series to take your documents — and workflow — to a higher level.

### POWERFUL FINISHING OPTIONS FOR ALL KINDS OF MEDIA

Create a variety of printed materials in-house. The bizhub 658e series supports a wide range of high-level finishers for various types of outputs. Multiple finishing options. One single unit. The newly developed FS-537-537SD finisher handles a wide range of tasks such as z-folding, tri-folding, booklet making, hole-punching, 100-sheet stapling and more. Now with a reduced footprint and internal z-folding unit, making installation faster and easier. The result is a finisher that's become the industry standard for compactness.

For more options you also have the FS-536/536SD floor finisher with 50-sheet stapling. If you don't want to add to the footprint of your MFP, we have the FS-533\* inner finisher, an economical and versatile finishing solution.



The bizhub series has a robust variety of finishing capabilities to meet your needs.



Corner stapling



Two-point stapling



Two-hole punching



Three-hole punching



Duplex



Combined mixplex/mixmedia



Half-fold



Sheet insertion, report



Tri-fold



Booklet



Offset sorting



Z-fold



Banner printing

\*bizhub 558e/458e only.

# THE RIGHT TOOLS TO **IMPROVE YOUR CAPABILITIES**

## **MOBILE PRINTING**

The bizhub 658e series supports various mobile print technologies. It's flexible to suit your user environment, such as Google Cloud Print Classic, which enables output outside the office and Mopria. The operation panel includes a mobile touch area compatible with devices that support NFC (Near Field Communication). By holding devices installed with Konica Minolta Mobile Print app over the NFC area, you'll be able to:

- Pair immediately with the MFP
- Log in to the unit if user authentication is set
- Print or scan

## **WIRELESS CONNECTIVITY**

Wireless extension functions, AP mode and Wi-Fi Direct are supported, enabling an optimum setup to match any office network environment. Flexible support for BYOD and new connection environments can be built without making additional investments.

## **AUTHENTICATION**

We provide powerful security safeguards and systems, including an optional built-in IC card reader for fast, simple ID card authorization. Our bizhubs accept Biometric Authentication, input for HID Proximity Cards, iClass Cards and Magnetic Strip Cards, and CAC/PIV Card\* support. Since user authentication is one of the key factors for ensuring security, choose from a magnetic card, a PIN code or a biometric fingerprint scan. Individual access rights can be defined for each user.



**KONICA MINOLTA**  
**Mobile Print**

## **SUPPORTS HDD MIRRORING**

HDD Mirroring is the real-time synchronization of main HDD and optional backup HDD. Risk of losing data is reduced significantly, even if the main HDD fails, as it automatically switches to the optional HDD.

## **CARBON COPY**

This feature allows you to print the same original on different sheets of paper loaded in multiple trays in one command. Because you can obtain printing results that look like carbon-copied slips using the print command once, this function is called Carbon Copy.

## **SECURITY**

Konica Minolta's bizhub SECURE, a professional security service, provides a powerful level of lock-down protection that guards your bizhub from unauthorized operation. Our IEEE 802.1X SSL and IPsec protocol authentication methods allow easy integration into protected networks, plus secure network communication. Virtually all bizhub systems conform to the ISO 15408 EAL3 standard, meeting the highest international security standards.

## **EASY SET ECO FUNCTIONS ON THE MAIN MENU**

Toner/paper saving, power saving or any Eco function shortcuts can be registered on the main menu. The cumulative power consumption is displayed as a list or graph on a monthly/hourly basis.

### **Register Eco Mode Shortcuts on the Main Menu**

If the Eco function is set on the administrator screen, the shortcut button for any Eco function can be displayed on the main menu. Any of the Eco functions, namely Eco setting/Eco copy/Eco index can be directly accessed.

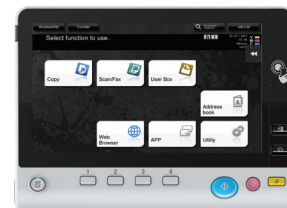
### **Control Power Consumption with Eco Setting**

One touch settings are available to reduce the brightness of the touch panel or to turn the animation display off and thereby controlling power consumption.



## **WEB BROWSER AND IWS FUNCTIONS**

Allows users to access the web directly from the bizhub control panel. You can access HTTP pages, preview PDF files and search and view manuals written in HTML. This function is standard.



## **CUSTOMIZE THE MAIN MENU**

Up to 23 shortcut keys can be set in the main menu for quick and easy access to frequently used functions.



## **CHECK THE POWER USAGE STATUS THROUGH THE ECO INDEX**

Visualize the level of eco-contribution by checking the percentage of 2-sided original printing, color printing and page consolidation and the cumulative time spent on waiting/operation.



## **WIDGETS**

Users can paste text boxes, icons or GIF animation clips as widgets on the control panel. Advertisements and operating precautions can also be effectively displayed.

\*Not available at time of launch.

# bizhub 658e/558e/458e

## MONOCHROME MID-VOLUME MULTIFUNCTION PRINTERS

### SYSTEM OVERVIEW

<b>System memory</b>	4 GB
<b>System hard disk</b>	250 GB Standard
<b>Interface</b>	10-BASE-T / 100-BASE-TX / 1,000-BASE-T Ethernet, USB 2.0
<b>Network protocols</b>	TCP/IP (IPv4/IPv6), SMB, LPD, IPP, SNMP, HTTP, HTTPS
<b>Frame types</b>	Ethernet 802.2, Ethernet 802.3, Ethernet II, Ethernet SNAP
<b>Document feeder (optional)</b>	Up to 300 originals / 5.5" x 8.5" to 11" x 17" / 35–210 gsm
<b>Printable paper size</b>	<b>Scanning/Copying:</b> up to 11" x 17" <b>Printing:</b> up to 11" x 17" full bleed on 12" x 18" paper Custom paper sizes Banner paper max.: 11.75" x 47.25"
<b>Printable paper weight</b>	52–300 gsm
<b>Paper input capacity</b>	<b>Standard:</b> 1,150 sheets / <b>Max.:</b> 6,650 sheets
<b>Tray 1</b>	500 sheets / 5.5" x 8.5" to 11" x 17" / 52–256 gsm
<b>Tray 2</b>	500 sheets / 5.5" x 8.5" to 12" x 18" / 52–256 gsm
<b>PC-115 Paper feed cabinet (optional)</b>	500 sheets / 5.5" x 8.5" to 11" x 17" / 52–256 gsm
<b>PC-215 Paper feed cabinet (optional)</b>	2 x 500 sheets / 5.5" x 8.5" to 8.5" x 11" / 52–256 gsm
<b>PC-415 Paper feed cabinet (optional)</b>	2,500 sheets / 8.5" x 11" / 52–256 gsm
<b>Large capacity tray LU-207 (optional)</b>	2,500 sheets / 8.5" x 11" to 12" x 18" / 52–256 gsm
<b>Large capacity tray LU-302 (optional)</b>	3,000 sheets / 8.5" x 11" / 52–256 gsm
<b>Manual bypass</b>	150 sheets / 4" x 6" to 12" x 18" / custom paper sizes / 50–300 gsm
<b>Automatic duplexing</b>	5.5" x 8.5" to 12" x 18" / 52–256 gsm
<b>Finishing modes</b>	Offset, group, staple, sort, punch, half-fold, z-fold, tri-fold, post-insertion, booklet
<b>Output capacity</b>	<b>Max. with finisher:</b> 3,300 sheets <b>Max. without finisher:</b> 250 sheets
<b>Stapling (optional)</b>	<b>Max.:</b> 100 sheets or 94 sheets + 2 cover sheets (up to 209 gsm)
<b>Stapling output capacity</b>	<b>Max.:</b> 1,000 sheets
<b>Tri-fold (optional)</b>	Up to 3 sheets
<b>Tri-fold capacity</b>	<b>Max.:</b> 30 sheets (tray)
<b>Booklet (optional)</b>	<b>Max.:</b> 20 sheets or 19 sheets + 1 cover sheet (up to 209 gsm)
<b>Booklet output capacity</b>	<b>Max.:</b> 100 sheets (tray)
<b>Copy/print volume</b>	<b>Max.:</b> <b>458e:</b> 200,000 <b>558e:</b> 250,000 <b>658e:</b> 300,000 pages / month <sup>1</sup>
<b>Toner lifetime</b>	26,000 pages
<b>Imaging unit lifetime</b>	<b>458e:</b> 275,000 pages / 600,000 pages (drum / developer) <b>558e:</b> 285,000 pages / 600,000 pages (drum / developer) <b>658e:</b> 300,000 pages / 600,000 pages (drum / developer)
<b>Power consumption</b>	120 V / 60 Hz, less than 0.5 kW (system)
<b>System dimensions</b>	24.2" x 27" x 38" (W x D x H)
<b>System weight</b>	Approx. 212 lb

### PRINTER SPECIFICATIONS

<b>Print resolution</b>	1,800 x 600 dpi, 1,200 x 1,200 dpi
<b>PDL</b>	PCL6 (XL 3.0), PCL5c, PostScript 3 (ver. 3016), XPS
<b>Operating systems</b>	Windows (x32/x64): Vista / 7 / 8 / 10 Windows Server (x32/x64): 2008 / 2008 R2 <sup>3</sup> / 2012 <sup>3</sup> / 2016 <sup>3</sup> Macintosh OS X 10.8 or later Linux / Unix / Citrix
<b>Printer fonts</b>	80 PCL Latin, 137 PostScript 3
<b>Print functions</b>	Direct Print of PCL, PS, TIFF, XPS, PDF, encrypted PDF files and OOXML (DOCX, XLSX, PPTX), multimedia and mixplex, "Easy Set" job programming, overlay, watermark, copy protection, carbon copy print

### COPIER SPECIFICATIONS

<b>Copying process</b>	Electrostatic laser copy, tandem, indirect
<b>Toner system</b>	Simitri <sup>®</sup> HD Polymerized Toner
<b>Print speed (8.5" x 11")</b>	<b>458e:</b> Up to 45 ppm <b>558e:</b> Up to 55 ppm <b>658e:</b> Up to 65 ppm (portrait)
<b>Print speed (11" x 17")</b>	<b>458e:</b> Up to 22 ppm <b>558e:</b> Up to 27 ppm <b>658e:</b> Up to 33 ppm (portrait)
<b>Autoduplex speed (8.5" x 11")</b>	<b>458e:</b> Up to 45 ppm <b>558e:</b> Up to 55 ppm <b>658e:</b> Up to 65 ppm (portrait)
<b>1st copy out time</b>	<b>458e:</b> 4.0 sec. <b>558e:</b> 3.5 sec. <b>658e:</b> 3.0 sec.
<b>Warm-up time</b>	<b>458e:</b> Approx. 20 sec. <sup>2</sup> <b>558e/658e:</b> Approx. 22 sec. <sup>2</sup>
<b>Copy resolution</b>	600 x 600 dpi
<b>Gradations</b>	256 gradations

<b>Multi-copy</b>	1–9,999
<b>Original format</b>	Up to 11" x 17"
<b>Magnification</b>	25–400% in 0.1% steps, auto zooming
<b>Copy functions</b>	Electronic sorting, multi-job, adjustments (contrast, sharpness, image density), proof copy, interrupt mode, color mode, separate scan, sort/group, combination, original selection, ID card copy, 2-in-1, 4-in-1

### SCANNER SPECIFICATIONS

<b>Scan speed</b>	<b>B&amp;W / Color:</b> up to 240 opm
<b>Scan resolution</b>	<b>Max.:</b> 600 x 600 dpi
<b>Scan modes</b>	Scan-to-Email, Scan-to-SMB, Scan-to-FTP, Scan-to-Box, Scan-to-USB, Scan-to-WebDAV, Scan-to-DPWS, Network TWAIN scan
<b>File formats</b>	JPEG, TIFF, PDF, PDF/A 1a and 1b (optional), compact PDF, encrypted PDF and searchable PDF (optional), XPS, compact XPS, PPTX and searchable PPTX (optional), searchable DOCX/XLSX (optional)
<b>Scan destinations</b>	2,100 (shared with fax), LDAP support
<b>Scan functions</b>	Annotation (text/time/date) for PDF, up to 400 job programs, real-time scan preview

### FAX SPECIFICATIONS

<b>Fax</b>	Super G3 (optional)
<b>Transmission</b>	Analog, Internet Fax, Color i-Fax, IP-Fax
<b>Resolution</b>	<b>Max.:</b> 600 x 600 dpi (ultra-fine)
<b>Compression</b>	MH, MR, MMR, JBIG
<b>Modem</b>	Up to 33.6 Kbps
<b>Destinations</b>	2,100 (single + group)
<b>Functions</b>	Polling, time shift, PC-fax, receipt to confidential box, receipt to email/FTP/SMB, up to 400 job programs

### USER BOX SPECIFICATIONS

<b>Storable documents</b>	<b>Max.:</b> 3,000 documents or 10,000 pages
<b>Type of user boxes</b>	Public Personal (with password or authentication) Group (with authentication)
<b>Type of system boxes</b>	Secure print, encrypted PDF, fax receipt, fax polling, annotation
<b>User box functionality</b>	Reprint, combination, download, sending (email/FTP/SMB and fax), copy box-to-box

### SYSTEM FEATURES

<b>Security</b>	ISO 15408 EAL <sup>4</sup> IEEE 2600.1 <sup>4</sup> IP filtering and port blocking SSL2, SSL3 and TLS1.0 network communication IPsec support IEEE 802.1x support FIPS 140-2 User authentication Authentication log Secure print Hard disk overwrite (8 standard types) Hard disk data encryption (AES 128) Memory data auto deletion Confidential fax receipt Print user data encryption Copy protection (Copy Guard, Password Copy) optional
<b>Accounting</b>	Up to 1,000 user accounts Active Directory support (user name + password + email + SMB folder) User function access definition Optional Biometric authentication (finger vein scanner) Optional ID card authentication (ID card reader)
<b>Software</b>	PageScope Net Care Device Manager PageScope Data Administrator PageScope Box Operator PageScope Direct Print Print Status Notifier Driver Packaging Utility Log Management Utility

<sup>1</sup> Maximum monthly duty cycle describes the maximum number of pages a device can output on a monthly basis. This specification is a guideline intended to offer a comparison of durability as it relates to the entire Konica Minolta MFP and printer product line so that the appropriate device can be placed in order to meet customer needs.

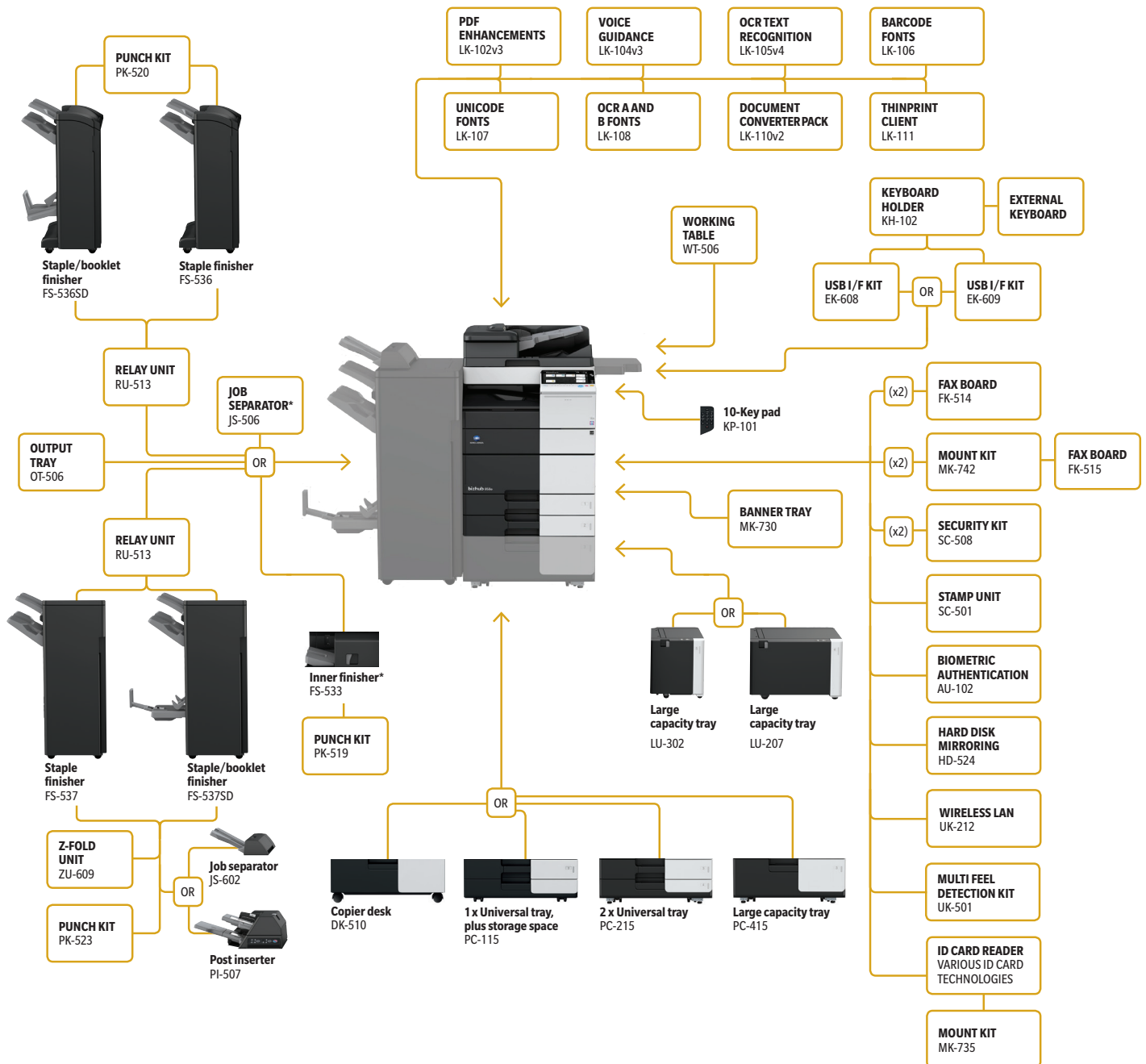
<sup>2</sup> Warm-up time may vary depending on the operating environment and usage.

<sup>3</sup> Supports x64 only.

<sup>4</sup> Certification pending.

# FLEXIBLE SOLUTIONS TO MEET YOUR NEEDS.

The bizhub 658e series are all about flexibility. It's adaptable, offering more power in less space, simple control and plug-and-play integration. The host of flexible options allows you to build the MFP solution that suits your specific needs.



\*Available for the bizhub 558e/458e only.



# INNOVATION THAT PUTS OUR PLANET FIRST.

**Protecting the planet has always been a top priority at Konica Minolta. Our broad array of environmental initiatives will help you realize your own sustainability goals:**

## CLEAN PLANET

Our program provides cost-free recycling for all our consumables, including toner cartridge and bottles, imaging units, developer and drums with prepaid shipping labels and cost-free packaging. We can even arrange pick-up from high-volume users.

## SUSTAINABILITY

Our exclusive Simitri® HD toner formulation uses plant-based biomass material to reduce environmental impact. The latest bizhub models are EPEAT-Gold Certified and achieve among the lower power consumption rate of MFPs in their class. Energy saving modes reduce power consumption while maintaining fast first-copy output — and a unique Eco-indicator helps you monitor paper, toner and energy usage.

## ECOVISION 2050

We're committed to a mid-century goal of reducing CO<sub>2</sub> emissions by 88% over 2005 levels, minimizing greenhouse gases that may contribute to global warming. We pursue that goal every day — minimizing energy consumption, cutting pollution and using recycled materials in construction.



For complete information on Konica Minolta products and solutions, please visit: [CountOnKonicaMinolta.com](http://CountOnKonicaMinolta.com)



© 2018 KONICA MINOLTA BUSINESS SOLUTIONS U.S.A., INC. All rights reserved. Reproduction in whole or in part without written permission is prohibited. KONICA MINOLTA, the KONICA MINOLTA logo and bizhub are registered trademarks or trademarks of KONICA MINOLTA, INC. All other product and brand names are trademarks or registered trademarks of their respective companies or organizations. All features and functions described here may not be available on some products. Design & specifications are subject to change without notice.

## PARTNERSHIP

Konica Minolta can help give shape to your ideas and partner with you to achieve your corporate objectives. Contact us to realize opportunities in:

## INFORMATION MANAGEMENT

- Enterprise Content Management (ECM)
- Document Management
- Automated Workflow Solutions
- Business Process Automation
- Security and Compliance
- Mobility
- eDiscovery Services

## IT SERVICES

- Application Services
- Cloud Services
- IT Security
- Managed IT Services
- IT Consulting & Projects
- Business Consulting Services

## TECHNOLOGY

- Office Multifunction Business Solutions
- Commercial and Production Printers
- 3D Printers
- Wide Format Printers
- Laptops, Desktops and Computer Hardware
- Servers and Networking Equipment
- Managed Print Services (MPS)
- Managed Enterprise Services



**KONICA MINOLTA**

KONICA MINOLTA BUSINESS SOLUTIONS U.S.A., INC.  
100 Williams Drive, Ramsey, New Jersey 07446

[CountOnKonicaMinolta.com](http://CountOnKonicaMinolta.com)



Item #: 658EBRO  
2/2018-C